


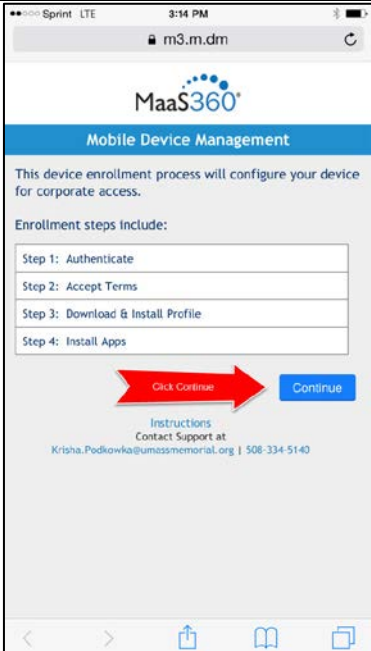


ADDING MAAS360 TO AN APPLE IOS DEVICE

UMass Memorial Health Care is implementing Mobile Device Management (MDM) solution called MaaS360. MaaS360 will be implemented on all mobile devices (personal and business) that access UMass Memorial Health care email and applications. Please following the instructions below for setting up MaaS360 on your Apple iOS device.

Before You Start:

- You will need to have an iTunes account so that you can access the MaaS360 app from the App Store on your device. You will need to know the password as well. There will be no charges to your account, but the information is required.
- You must have the most current iOS version before enrolling. Only iPhones and iPads running iOS 10.3 and higher will be supported with MaaS360. To see what version your device is running, go to Settings > General Software Update. Please upgrade your version if lower than 10.3.

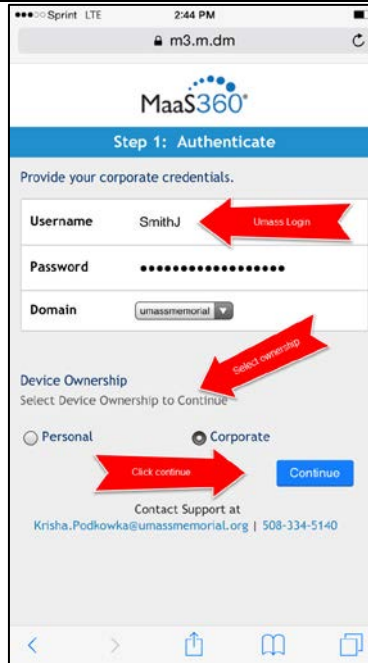
<p>Step 1</p> <ol style="list-style-type: none"> On your iPhone or iPad, navigate to your internet browser by clicking on the Safari icon In the navigation bar at the top, type in the following URL to go to the enrollment page (next slide will show you what that page should look like): https://m.dm/ummhc (Do not click on this link) 	 <p style="text-align: center;">Safari</p>
<p>Step 2</p> <p>Select "Continue"</p>	



ADDING MAAS360 TO AN APPLE IOS DEVICE

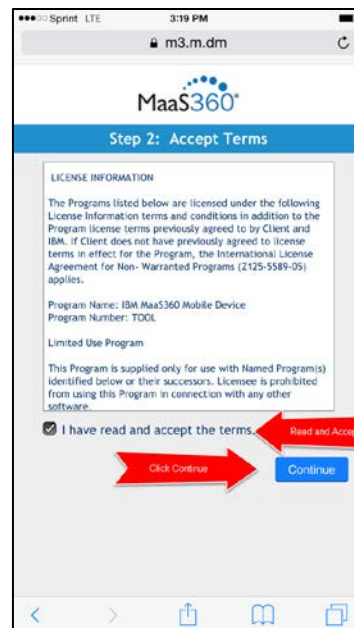
Step 3

- a. Enter your UMass Memorial Network Login Username and Password
 - *The same credentials you use to log into your computer*
- b. Next, select appropriate Device Ownership.
 - *If you own the device select "Personal"*
 - *If UMass Memorial has issued the device to you, select "Corporate"*
- c. Next, select "Continue"



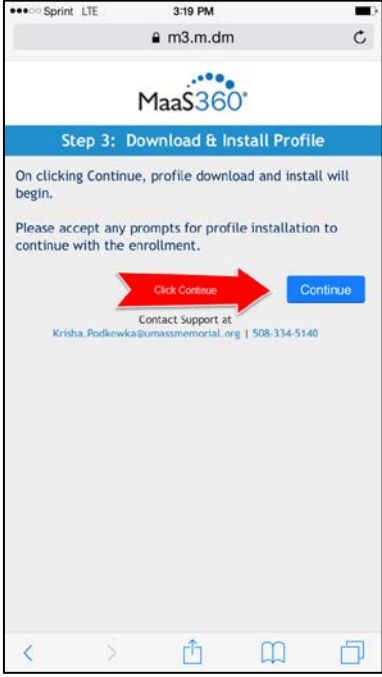
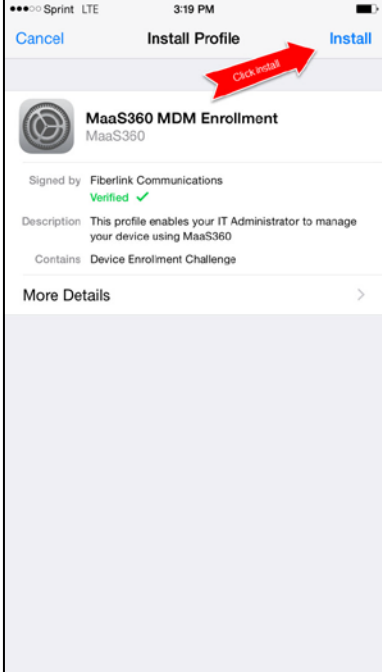
Step 4

- a. Read and accept the terms
- b. Select the check-box next to "I have read and accept the terms."
- c. Next, select "Continue"





ADDING MAAS360 TO AN APPLE IOS DEVICE

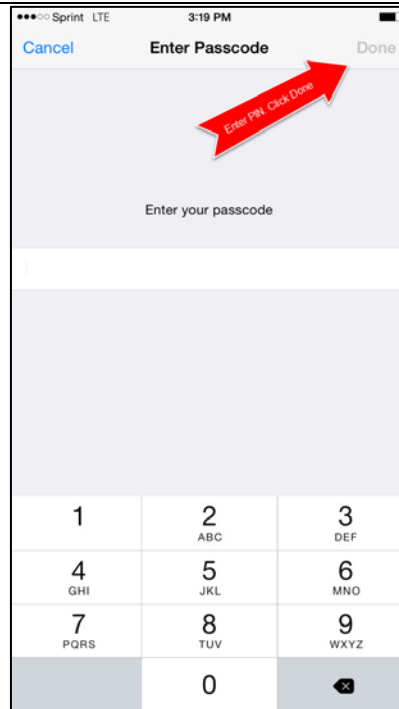
<p>Step 5</p> <p>Select "Continue" to begin the installation.</p>	
<p>Step 6</p> <p>Once you see the green "Verified" with the check mark, Select "Install"</p> <p>Do not attempt to select until "Verified"</p>	



ADDING MAAS360 TO AN APPLE IOS DEVICE

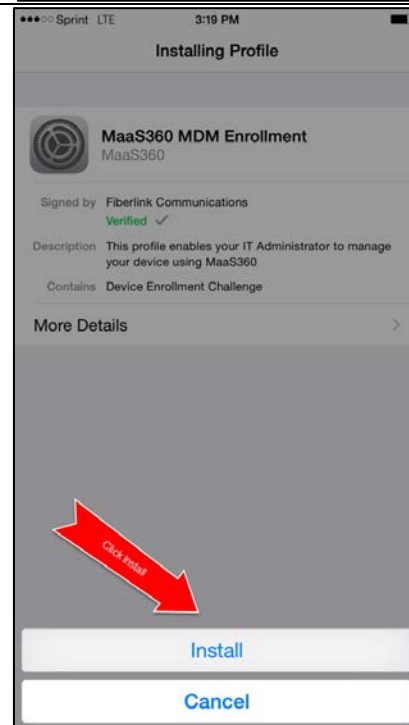
Step 7

Enter your device's Passcode and Select "Done"



Step 8

Select "Install" to proceed





ADDING MAAS360 TO AN APPLE IOS DEVICE

Step 9

Select "Install" to proceed to the next step.



Installing this profile will allow the administrator at "https://services.m3.maas360.com/ios-mdm/customer/30027267/device/AppIF2LPKCJ6G5QQ/platform/3/ios-mdm.htm" to remotely manage your iPhone.

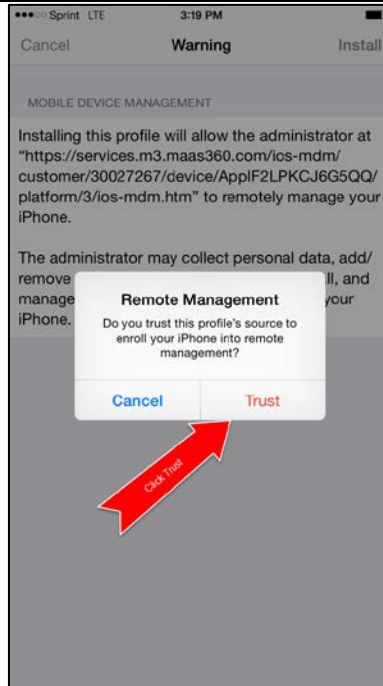
The administrator may collect personal data, add/remove accounts and restrictions, list, install, and manage apps, and remotely erase data on your iPhone.



ADDING MAAS360 TO AN APPLE IOS DEVICE

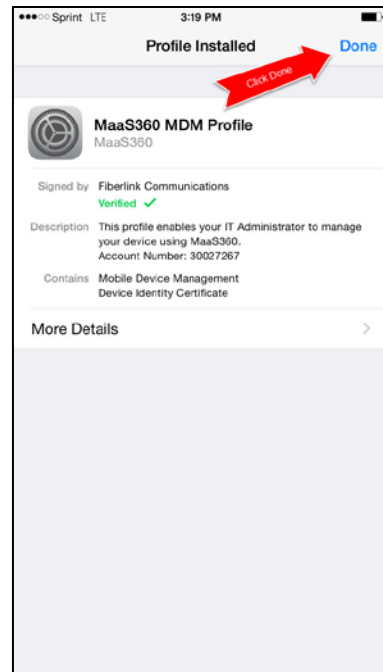
Step 10

Select "Trust" to allow the MDM MaaS360 profile on the device.



Step 11

Select "Done" to proceed.



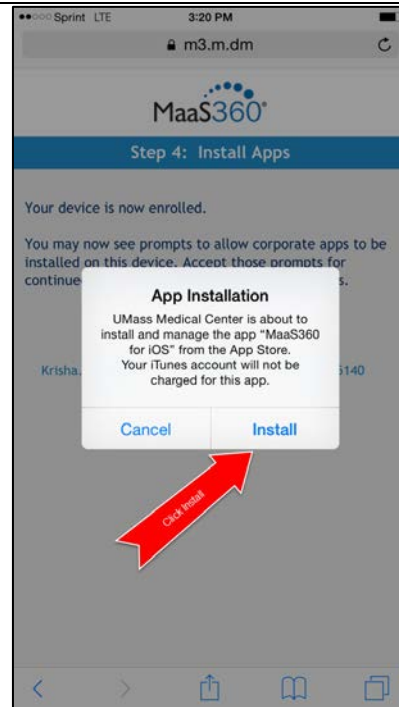


ADDING MAAS360 TO AN APPLE IOS DEVICE

Step 12

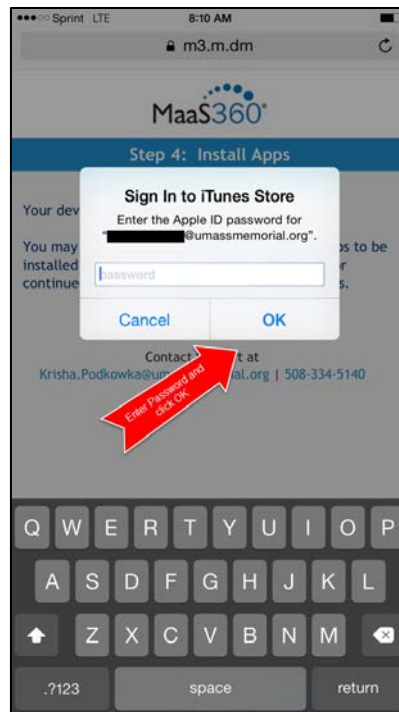
Select "Install" to allow navigation to the App Store.

- *Your iTunes account will be used to download the app, but be assured that you will not be charged for anything.*



Step 13

Enter your password for your apple ID and then Select "OK"

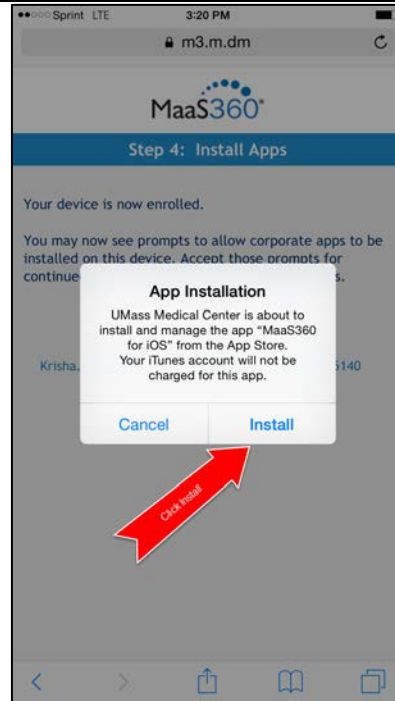




ADDING MAAS360 TO AN APPLE IOS DEVICE

Step 14

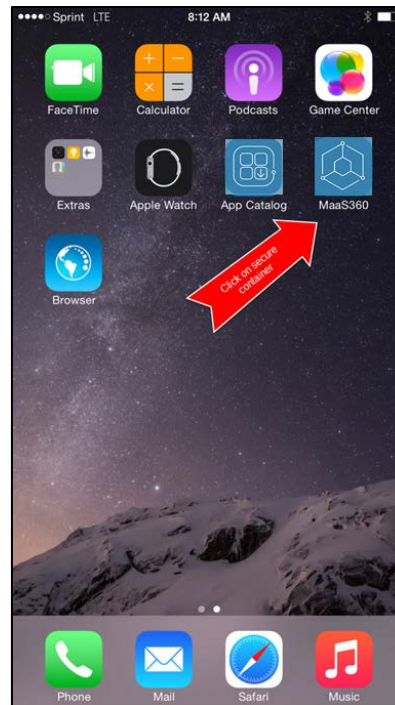
- Enter your password for your apple ID.
- Now go to the your device's home screen.



Step 15

Now that your app has finished loading, select the "MaaS360" app.

This is your "secure container."

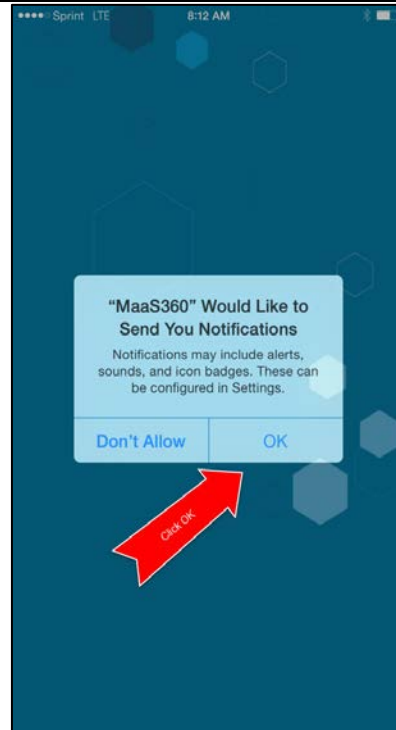




ADDING MAAS360 TO AN APPLE IOS DEVICE

Step 16

Select "OK". Doing so will allow you to be alerted when you receive an email, or when a policy has been updated.



Step 17

The PIN you are creating will be unique to MaaS360. If you have Touch ID enabled, you will be able to log into MaaS360 using that after the PIN is created.





ADDING MAAS360 TO AN APPLE IOS DEVICE

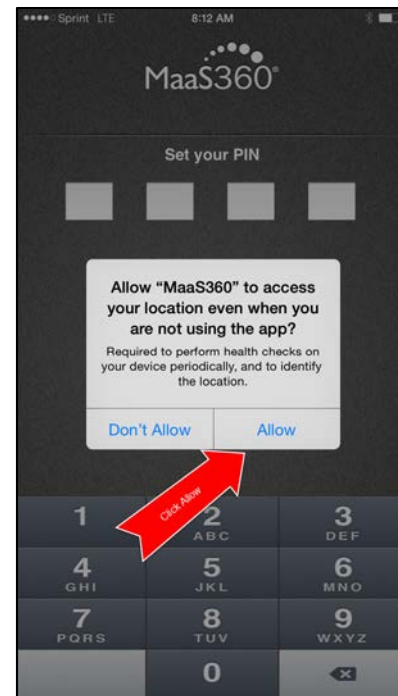
Step 18

Type your PIN once more to confirm.



Step 19

Select "Allow". Doing so will enable the IS Security team to locate the device if lost or stolen.

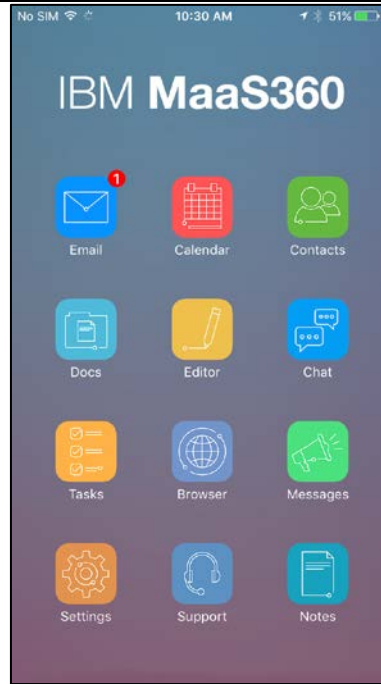




ADDING MAAS360 TO AN APPLE IOS DEVICE

You are now in the “secure container”!

From here you can securely access your UMass Memorial email, access OurNet (from the Browser) and access shared and saved documents



STOP!

If you still wish to use the e-mail and calendar application that comes loaded on your phone to access UMass e-mail and calendar, please stop here and move ahead to the final page of this Job Aid.

Note: In the future, when UMass Memorial migrates to a new email system, MaaS360 Mail & Calendar will become the only way to access your UMass Memorial email and calendar. At that time you will need to sign back into MaaS360 to finish setup. Stopping here will allow you to continue the download process in the future.

Additionally, if you do not require access to UMass Memorial e-mail or calendar, and only want to be able to access UMass Resources via the App Catalog, you may also stop here and move ahead to the final page of this Job Aid.

If you wish to continue with the setup of MaaS360 now, please continue with these instructions and remove the old email account first as leaving it on will cause your contacts to be duplicated.



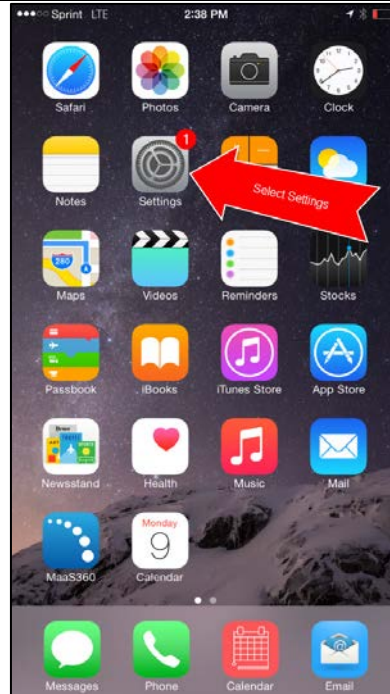


ADDING MAAS360 TO AN APPLE IOS DEVICE

Step 20

To remove the pre-installed email settings on your phone, start by selecting “Settings”

Older iOS devices may require slightly different steps.



Step 21

Select “Mail, Contacts, Calendars” or “Mail”



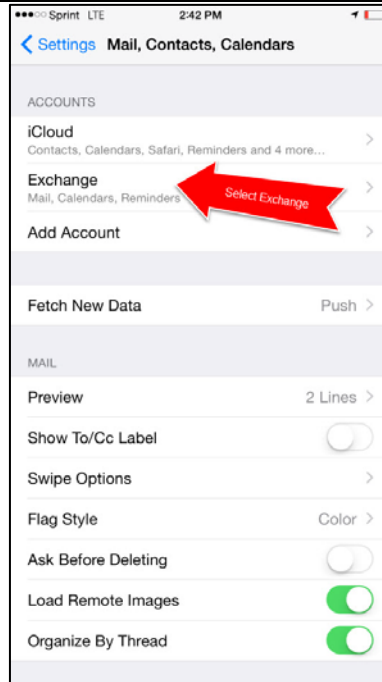


ADDING MAAS360 TO AN APPLE IOS DEVICE

Step 22

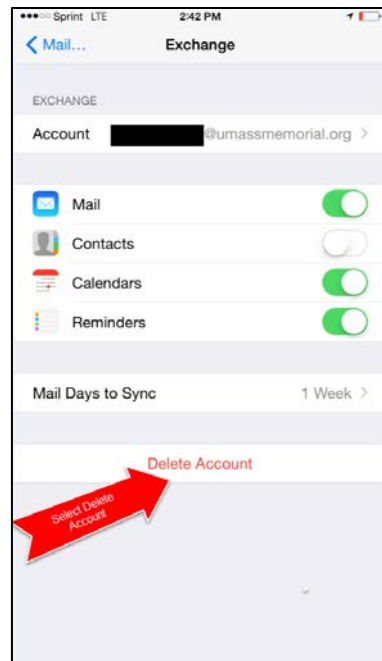
Select "Exchange"

This is your UMass Memorial email account



Step 23

- Make sure next to "Account" the email address ends with @umassmemorial.org
- Next select "Delete Account"

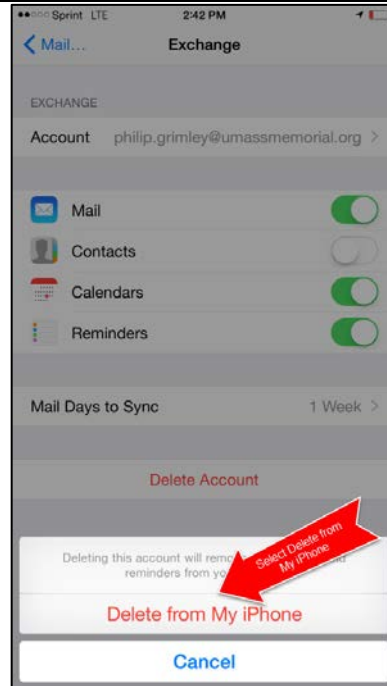




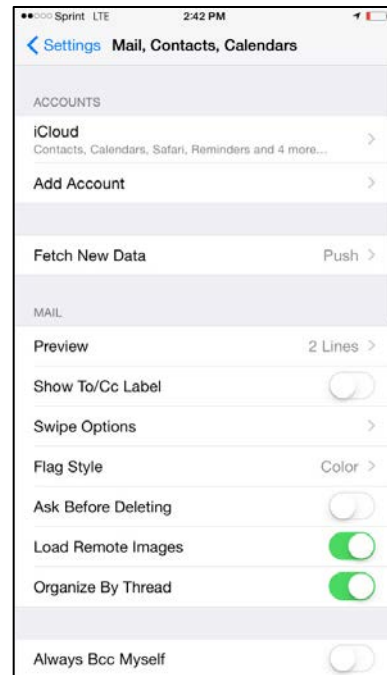
ADDING MAAS360 TO AN APPLE IOS DEVICE

Step 24

Select "Delete from My iPhone"



Now you will see that your UMass Memorial email account has been deleted from your device.



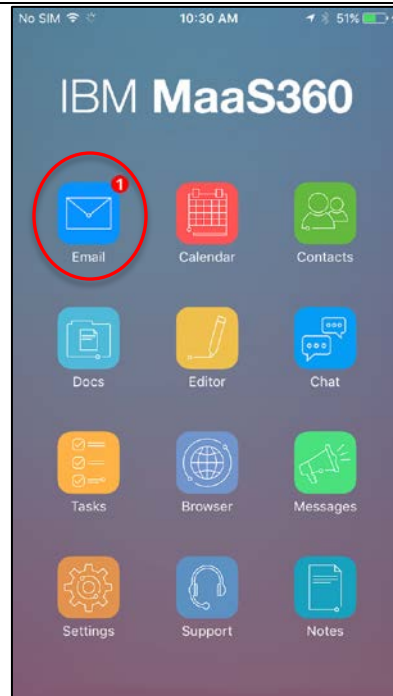


ADDING MAAS360 TO AN APPLE IOS DEVICE

Step 25

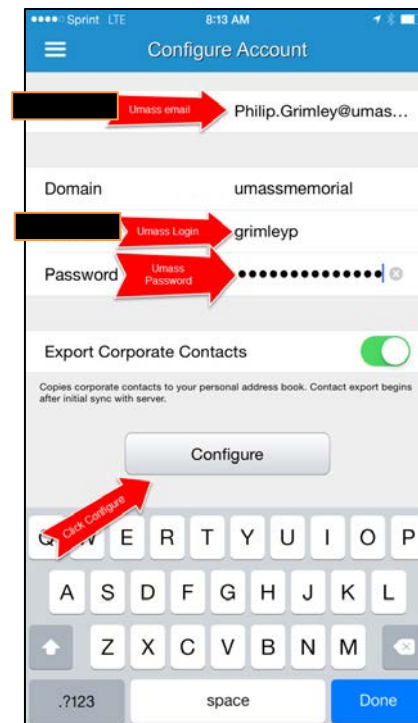
Now you are going to configure your UMass Memorial email.

Start by selecting the "Email" icon.



Step 26

- Enter your UMass Memorial Health Care email address in the email field.
- Enter your network user name and password.
- Select Configure.

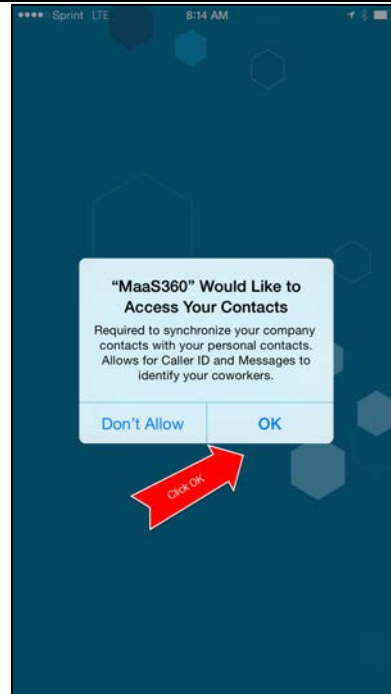




ADDING MAAS360 TO AN APPLE IOS DEVICE

Step 27

Select "OK" to allow MaaS360 to access your contacts



Step 28

You are now in your mailbox!

- Select the three stripes symbol in the top left to go back to your container.
- Select the mailbox symbol in the bottom left to access your other mailboxes.





Congratulations – MaaS360 is now on your device!

- Thank you for installing MaaS360 on your device.
- You are helping to keep sensitive information secure on your mobile device!
- Additional information, such as Frequently Asked Questions, instructions to remove credit card information from your iTunes account and instructions to add shortcut icons to your home screen can be found on the [MaaS360 page](#) under IS Projects on [IS/Epic Central](#)
- If you need further assistance, please contact Krisha Podkowska, Mobile Device Management Specialist, IS Security at Krisha.Podkowska@umassmemorial.org